

Digitising Social Care

Emma Harris, Assistant Director for Digitising Social Care
NHS Transformation Directorate



The NHS Transformation Directorate

The NHS Transformation Directorate unites staff from across NHS England and Improvement and the Department of Health and Social Care behind a common goal: **to drive innovation at scale where it can improve care for people and support staff.**

The NHS Transformation Directorate is led by Dr Tim Ferris.



People at the Heart of Care

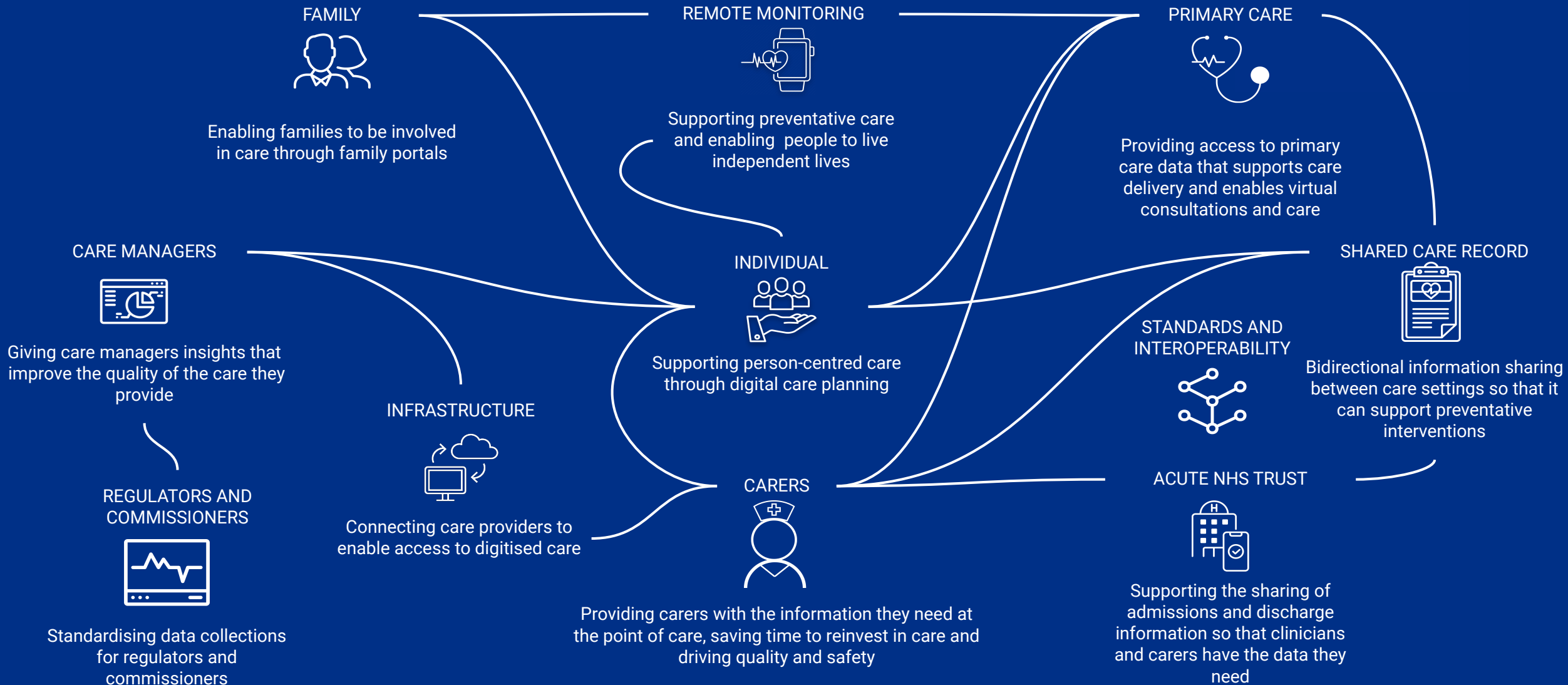
On the 1 December, The Department of Health and Social Care published the White Paper [People at the Heart of Care](#) which outlines the 10-year vision for the reform of the sector.

The White Paper recognised that when technology is embedded seamlessly into care and support services, it can help people to live happy, fulfilled lives in their homes and communities.

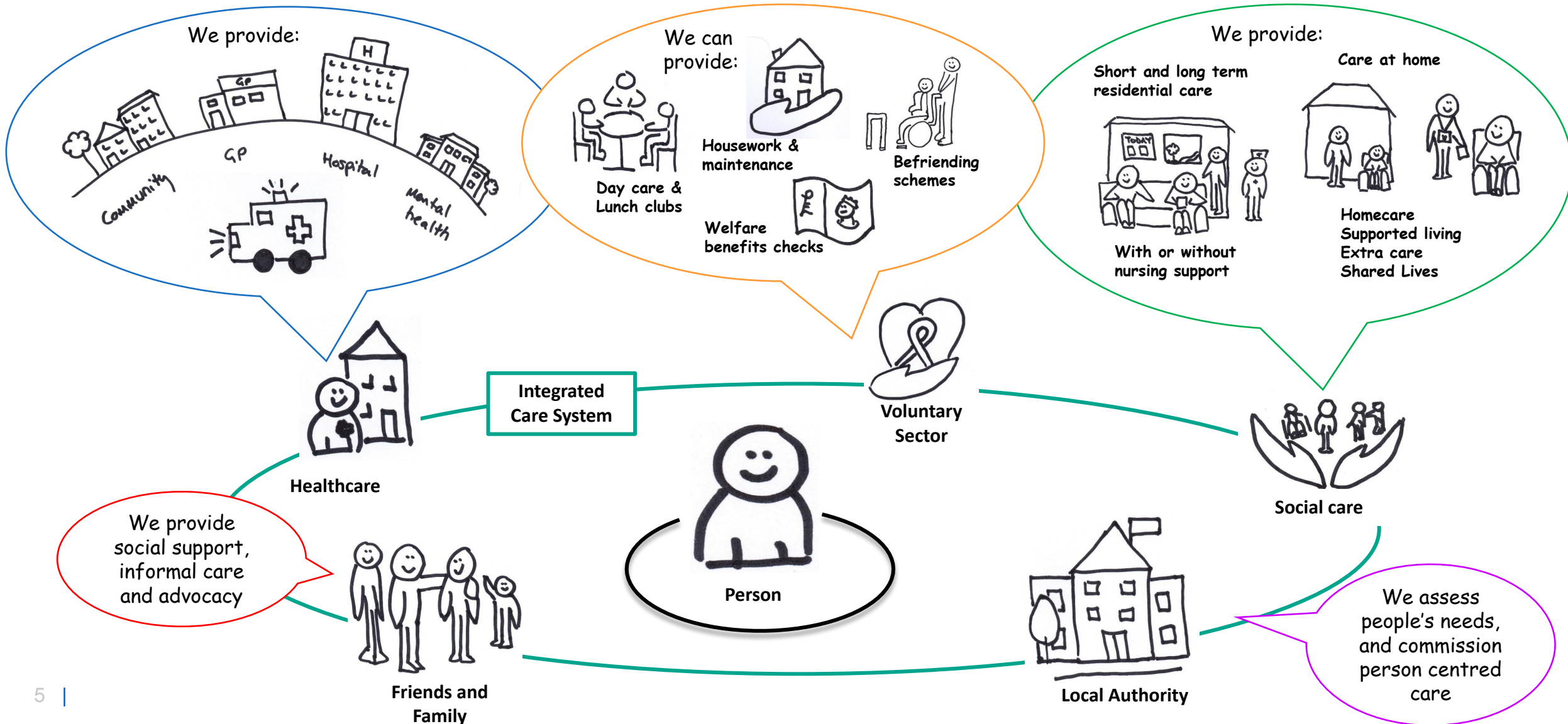
To support this goal, and the government's wider ambitions for reform, the White Paper committed to **invest at least £150m** in digitising the social care sector.



Why digitise?



Person centred Health and Care System



Vision and Mission

Vision Statement

An adult social care system that makes **best use of digital tools and technology** to deliver **improved care outcomes** for people.

Mission Statement

We will champion a **person-centred approach to the use of technology and data** in the adult social care sector, **improving the quality and safety of care**, understanding the barriers to adoption and **tackling digital and health inequalities**. Through an equal and integrated partnership with health, we will **support people to live well and independently for longer**.



Digitise



Connect



Transform

Strategic Alignment



There are a number of policy milestones which have been funded through the Spending Review (2022/23 to 2024/25) that we are committed to and are required to report on progress. There are commitments made in the People at the Heart of Care Adult Social Care Reform White Paper, Health and Social Care Integration - Joining Up Care for People, Places and Populations, Data Saves Lives - Reshaping Health and Care with Data, Adult Social Care COVID-19 Winter Plan and NHS Transformation Directorate Technology Plan.

Our Commitments



Digitisation

We will ensure that at least 80% of CQC-registered adult social care providers have a digitised care record in place that can connect to a shared care record by March 2024.

We will ensure that sensor based falls prevention and detection technologies, such as acoustic monitoring, will be in use in care homes for the residents they have identified as most at risk of falls, reaching at least 20% of residents nationally by March 2024.

We will fund implementation support within each integrated care system.

Workforce

Provide a comprehensive digital learning offer that includes accessible training and online resources to build transferrable digital skills as well as practical guidance on using technology in all care settings.

Infrastructure and Cyber

Deliver fibre upgrades to those care homes still dependent on poor connections.

Ensure home care providers have the infrastructure they need to work digitally.

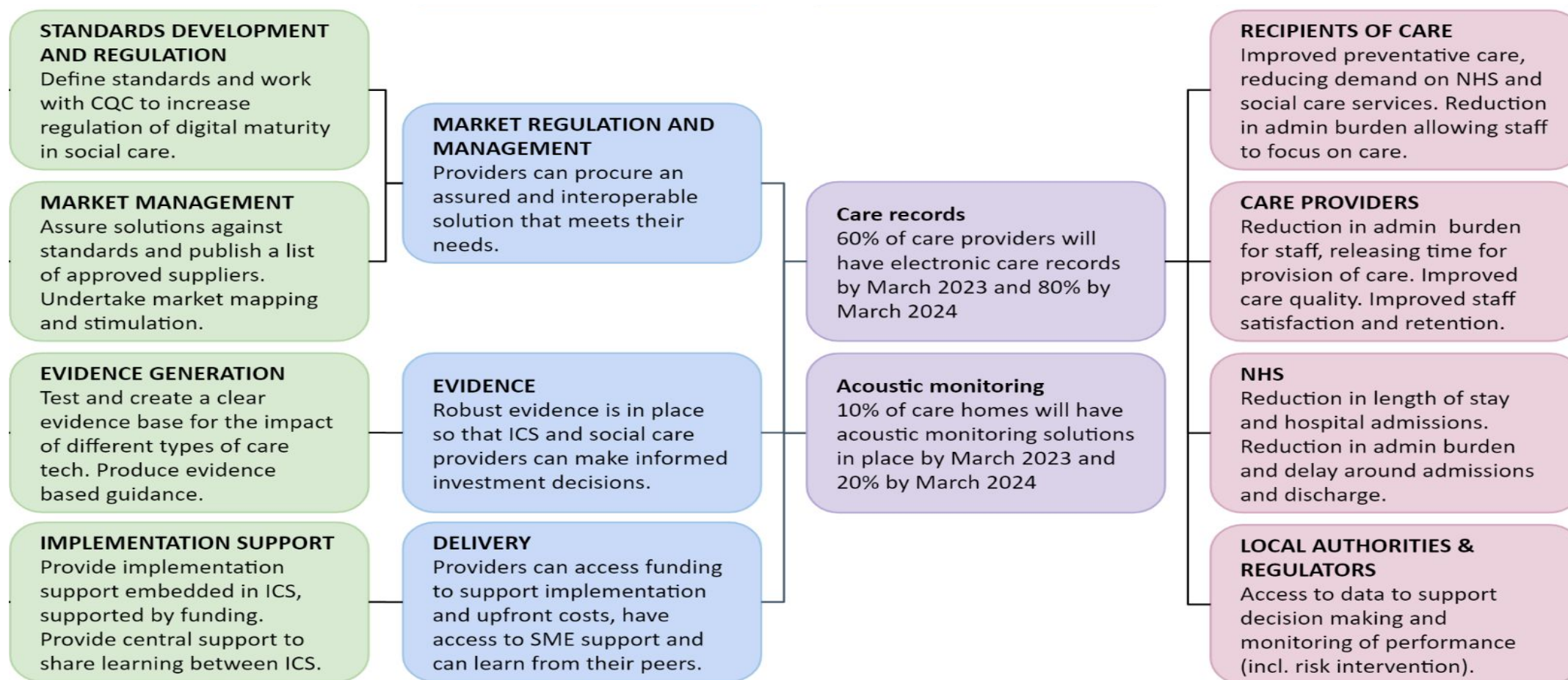
Support the telecare sector safely switch all analogue phone lines to digital.

Continue to broaden our data and cyber security support and drive uptake of the Data Security and Protection Toolkit (DSPT).

Future Tech Fund

Launch a new scheme to test ideas, scale those where there is proven benefit, and build the case for change.

Programme Structure

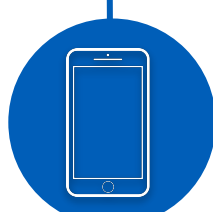


Digitising Social Care

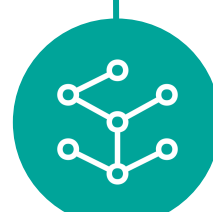
Introducing care tech that reduces demand on social care services and the NHS



Ensuring data is available where and when needed



Improving quality, safety and experience of care



Improving productivity



Meet the Implementation Team!



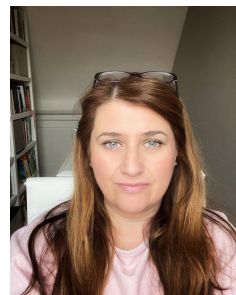
Emma Harris
Assistant Director of
Programmes

emma.harris@nhsx.nhs.uk



Liz Burtney
Programme Manager -
South East

liz.burtney@nhsx.nhs.uk



Karen Buttle
Programme Manager -
North East & Yorkshire

karen.buttel@nhsx.nhs.uk



Jane Collinson
Programme Manager -
Midlands

jane.collinson@nhsx.nhs.uk



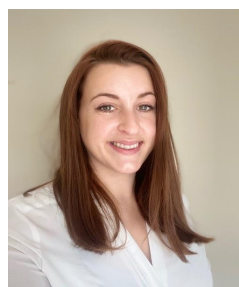
Caroline Day
Programme Manager -
East of England

Caroline.day@nhsx.nhs.uk



Mira Dimitrova
Programme Manager -
London

tsvetomira.dimitrova@nhsx.nhs.uk



Kerren Friend
Programme Manager -
North West

Kerren.friend@nhsx.nhs.uk



Emma Lenden
Programme Manager -
South West

emma.lenden@nhsx.nhs.uk



Charlotte Cookson
Senior Project Manager

Charlotte.cookson@nhsx.nhs.uk



Nesha Begum
Project Coordinator

nesha.begum@nhsx.nhs.uk

Adult Social Care Digital Transformation Fund



Approach

- The money has been split into **two funding streams for each ICS**:
 - Funding for **hands on implementation support** locally for ICS and social care providers
 - **Adult Social Care Digital Transformation Fund** to make funding available to CQC registered, ASC providers locally
- Both funding streams should be match funded
- Funding for the first year has been signed off by Treasury



Digitise



Connect



Transform

Scope of Allocation

In scope	Out of scope
<ul style="list-style-type: none"> ● Adoption of digital social care records across the sector ● Sensor based falls prevention and detection technologies such as acoustic monitoring for care homes ● Piloting of other types of care technology to build evidence of which has the most impact across the sector 	<ul style="list-style-type: none"> ● Shared Care Records (ShCR) ● Portal Access to NHS systems ● DSCR not on the assured providers list ● Infrastructure, connectivity and devices unless to support implementation of DSCR or care technologies in scope

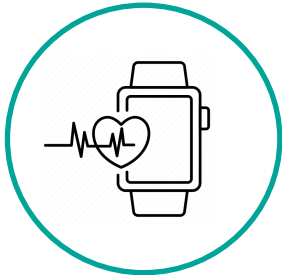
Example Care Provider benefits



Reductions in overall administrative task time



Improved management and oversight



Improved service delivered to care users



Increased compliance against Regulation and standards



Reduced costs for paper and printing



Improved data quality and management

Care Workforce experience



Quick and easy to input data and find information on individuals - all in one place



Graphs, charts and reports can be automatically produced reducing some administrative tasks/time



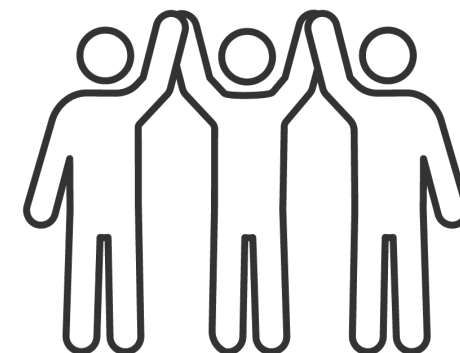
The data you provide informs the right people, at the right time to respond to changing needs of the people you care for



Prompts and alerts will further enable personalised and consistent care provision



Supporting or improving digital skills confidence



Programme Resources for Care Providers

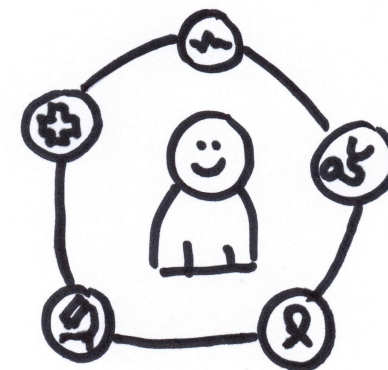


DSCR	Workforce	Cyber and DSPT	Connectivity
<ul style="list-style-type: none">• Digital Social Care Records Assured Supplier List• Guidance on purchasing through the assured supplier list• Buyers Guidance for care providers on purchasing a digital social care record• Masterclasses, run for care providers by care providers on adopting Digital Social Care Records	<ul style="list-style-type: none">• Digital training database providing information about a wide range of digital skills training courses	<ul style="list-style-type: none">• Better Security Better Care - a national local support programme to help adult social care providers to store and share information safely• Standards Met Guide - Completing the Data Security and Protection Toolkit for the First Time• Data Security and Protection Toolkit	<ul style="list-style-type: none">• Tops tips for using your iPads• Guide to Smartphones and Mobile Devices in Social Care• A guide to connectivity for care providers• How to get secure email• NHS Mail case studies• Rolling out filtered access to GP connect for non-clinical staff

Key tips

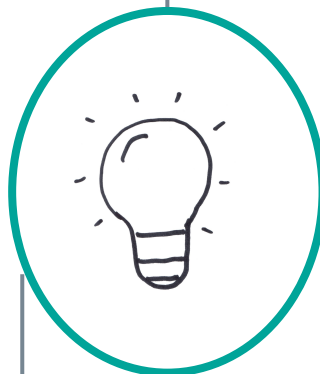
Top tips to get talking to your ICS'

1. Tell your ICS' **what are you doing around digitisation** - The more you digitise the more you have the capability to share and the better for people and public health outcomes - this narrative works well for ICS.
2. **Do not forget cyber security** and **aim to have completed the DSPT** (a prerequisite to DSCR) - secure and cyber aware providers deliver safer care and share data safely and securely.
 - a. **Example of good practice** - East Sussex regional care association informed their ICS what they were doing around digitisation and cyber security and this opened the door for increased collaborative working - it also **highlighted to the ICS the value of understanding and accessing social care data** to help with its wider drive to improve public health outcomes.



Key tips

Connect with the Implementation Lead in your Region



Tap into the [wealth of resources](#) provided by the NCF

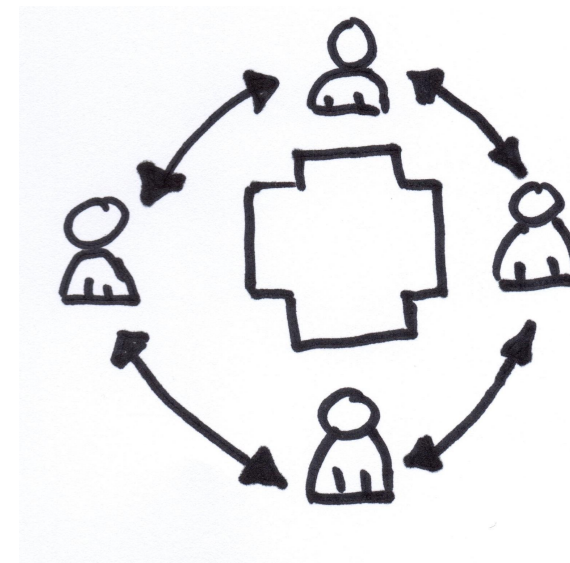
Reach out to [Digital Social Care](#) to find out your ICS



Advice for working across multiple ICS

In order to **future proof** investment in digital tech in social care, you should consider:

- Make sure **pricing is clear** and you know **what is in / out of scope** of what you're buying
- Check **what happens at the end of a contract** - can you easily move to a new product / supplier or are you locked in?
- Try to think about **how what you buy fits with what you already have** or are planning to get
- If you want assurance that the tech is fit for purpose and will work with other technologies in the future then [NHSE has an assured list of digital social care record / care planning suppliers](#). This assured list will be extended to cover additional types of tech in the near future.



How do we access the funding?

- Each ICS has been issued with a grant application template
- Each ICS will priorities funding based on local need
- We have asked each ICS for a contact for care providers which we can share
- If you are interested we would direct to this local contact for more detail

Connect with us

Email:

adultsocialcare@nhsx.nhs.uk



@NHSTransform



**www.linkedin.com/
company/transform_
nhs**

Questions?

